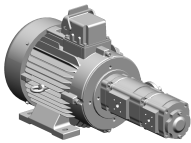


Pump assembly

Technical features

Electrical assemblies	Pump
Length (mm)	603.8 Millimeter
Voltage	400 Volt
Frequency	60 Hertz (1/second)
Voltage type	AC (alternating current)
(Nominal) speed (rpm)	1760 1/minute
Rated power	4000 Watt
Plug connection/type	Heavy-duty connector
Protection class	IP55



No 3-side view is currently available for this product

---

## Documents

No downloads available for this product