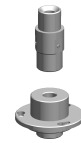


Bush

Technical data

INDEX TRAUB products	TNL20 • TNL20.2
Function (Component)	
Spindle clearance	24mm
Bar loading magazine	IEMCA Elite 220
Machining side	Main spindle
Spindle drive	Direct drive
Material diameter	2mm (0,08") • 3mm (0,12") • 4mm (0,16") • 5mm (0,20") • 6mm (0,24") • 7mm (0,28") • 8mm (0,31") • 9mm (0,35") • 10mm (0,39")



No 3-side view is currently available for this product

10922454
802928

INDEX

Documents

No downloads available for this product