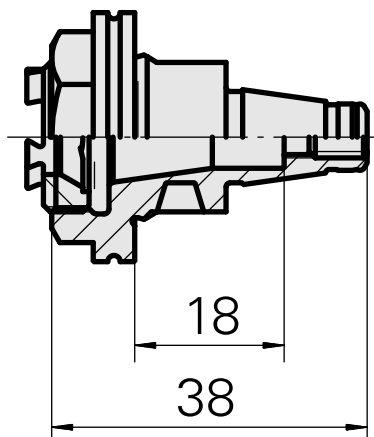
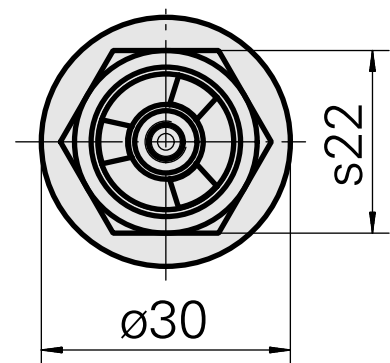
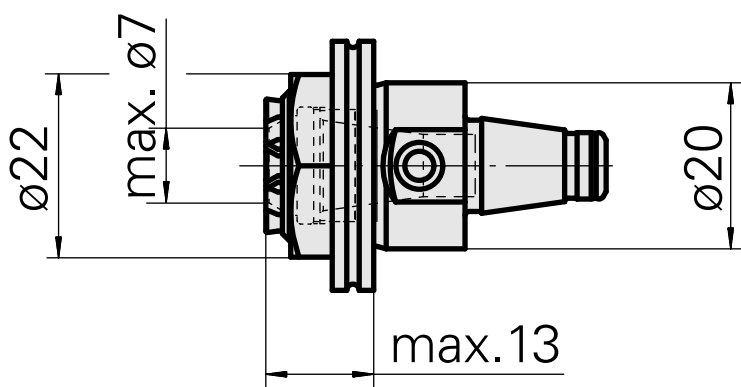
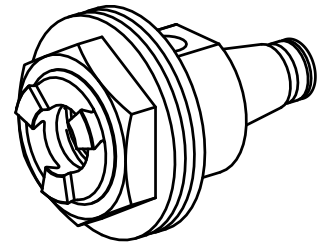


WFB 20-12 ER11, with internal clamping nut

Technical data

| | |
|-------------------------|-----------------|
| TH accessories category | WFB 20-12 |
| Mounting | ER11 |
| Quick change inserts | collet mounting |



Documents

No downloads available for this product

Accessories

Required for operation

[Spanner](#)

Product ID : 10262607

Previous product ID : 490219.3111

| | | | |
|--|------------------|----------------------|----------------------------------|
| TH accessories category Tool | Mounting ER11 | Collet type ER 11 | Clamping nut type Male thread |
| Tools for Collet chucks Clamping nut wrench | | | |

Optional accessories

Tool holder accessories

[Clamping nut](#)

Product ID : 10604420

Previous product ID : 901939.5111

| | | | |
|---|------------------|----------------------|----------------------------------|
| TH accessories category Clamping nut | Mounting ER11 | Collet type ER 11 | Clamping nut type Male thread |
|---|------------------|----------------------|----------------------------------|

Other accessories

[Clamping collet](#)

Product ID : 10086829

Previous product ID : 901930.0---

[tapping tool collet ET-1-12](#)

Product ID : 10001911

Previous product ID : 3239--

10708109
W9990113

INDEX

[tapping tool collet ER11GB](#)

Product ID : 10285407

Previous product ID : 900288

[Collet chuck](#)

Product ID : 10132309

Previous product ID : W999064-
