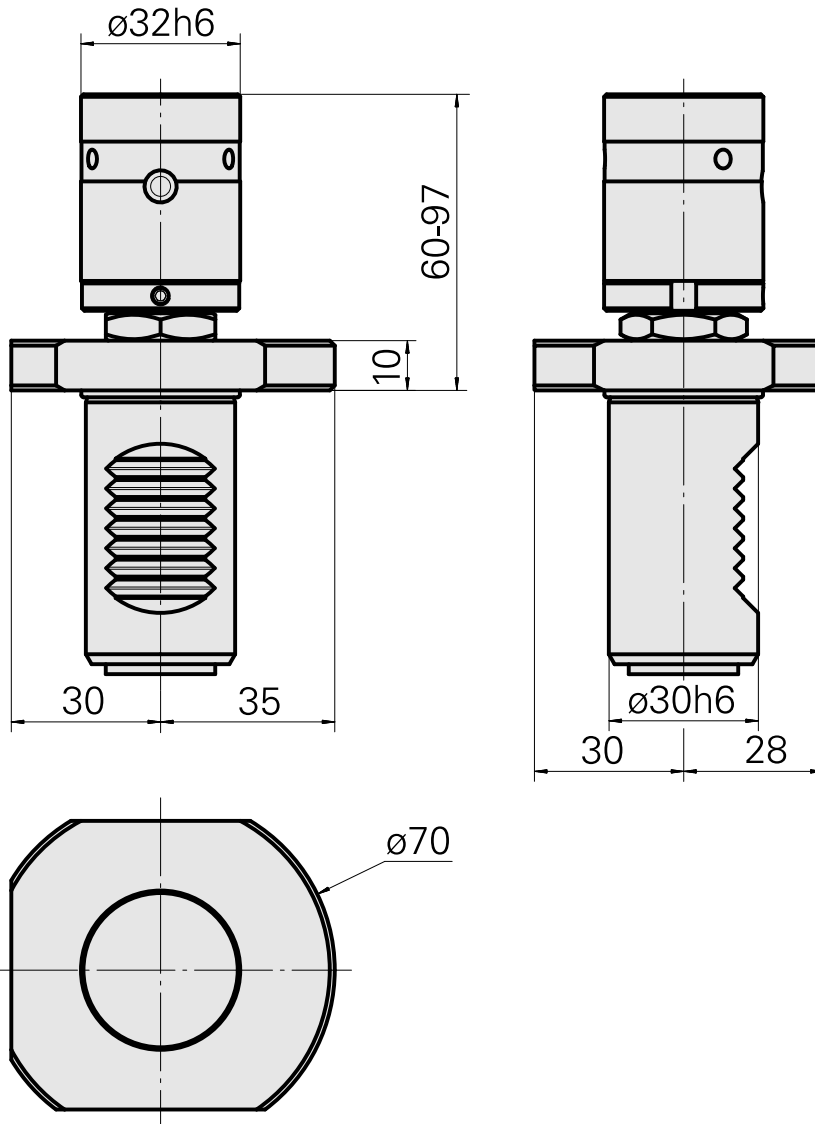
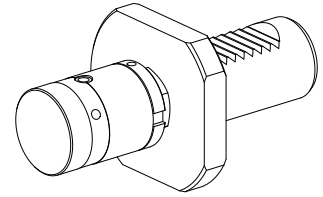


## Bar stop VDI 30, adjustable, live

### Technical data

|                      |                         |
|----------------------|-------------------------|
| Shank VDI            | VDI 30                  |
| Drive                | not live                |
| Fixation VDI         | none                    |
| reversable 180°      | no                      |
| X [mm]               | 60 - 97 (2.36" - 3.82") |
| Y [mm]               | -                       |
| Z [mm]               | -                       |
| INDEX TRAUB products | IT600 • TNA300          |



## **Documents**

No downloads available for this product