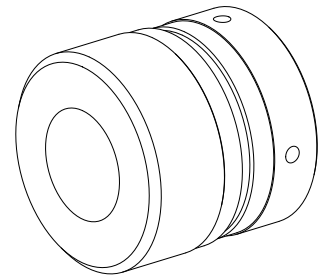


Unscrewing device, 60 mm, 65 mm

Technical features

| | |
|-----------------------------|---|
| INDEX TRAUB products | ABC • C200 • G200 • G220 • ABC.2 |
| Function (Component) | Unscrewing device |
| Spindle clearance | 60 mm • 65 mm |
| Bar loading magazine | INDEX MBL • INDEX MBF |
| Clamping stroke | 7 mm (0.28 ") • 20 mm (0.79 ") |
| Machining side | Main spindle |
| Machine number range | 6-digit machine number • 8-digit machine number |
| Material diameter | 19 mm (0.75 ") • 20 mm (0.79 ") • 21 mm (0.83 ") • 22 mm (0.87 ") • 23 mm (0.91 ") • 24 mm (0.94 ") • 25 mm (0.98 ") • 26 mm (1.02 ") • 27 mm (1.06 ") • 28 mm (1.1 ") • 29 mm (1.14 ") • 30 mm (1.18 ") |



No 3-side view is currently available for this product

Documents

No downloads available for this product