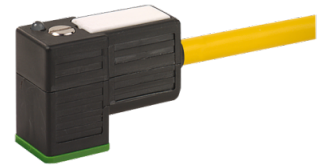


## Cable

### Technical data

<b>Electrical assemblies</b>	Electr. assembly lines
<b>Length (mm)</b>	3000 Millimeter
<b>Cross-section</b>	0.75 Square millimeter
<b>Number of wires/poles (ST)</b>	3 Piece
<b>Plug connection/type</b>	Cube shape C
	YE - yellow
<b>Protection class</b>	IP67
<b>Shield</b>	no - unshielded
<b>Insulating material</b>	PUR



No 3-side view is currently available for this product

---

**Documents**

No downloads available for this product