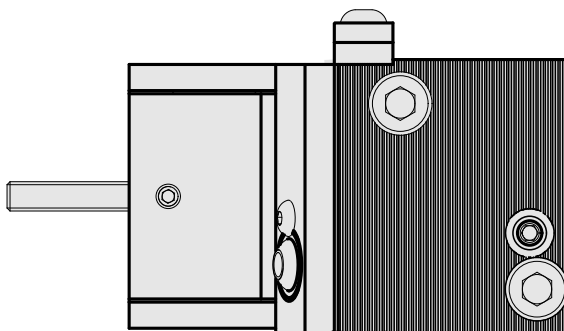
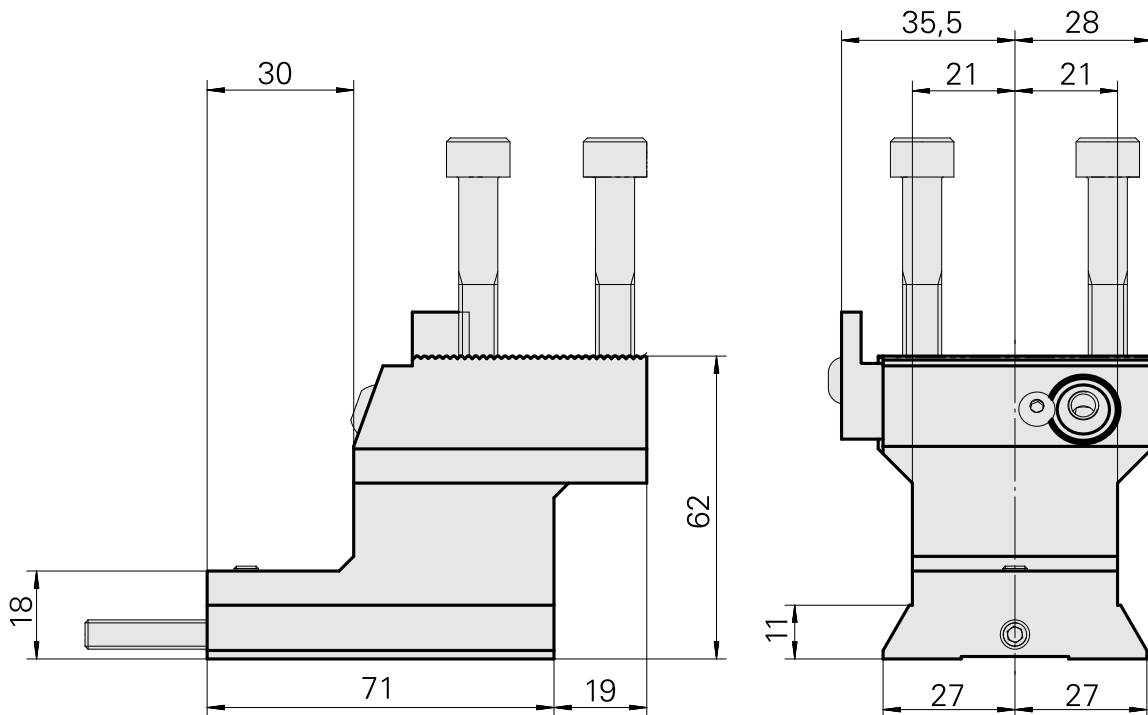
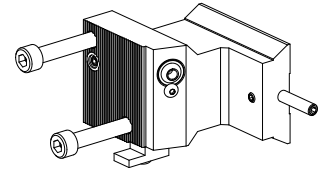


Basic holder Dovetail (ABC), vertically adjustable

Technical data

Shank VDI	Dovetail (ABC)
Drive	not live
Fixation VDI	none
Pressure	20 bar
reversible 180°	no
X [mm]	62 (2.44")
Y [mm]	-
Z [mm]	-30 (-1.18)
INDEX TRAUB products	ABC • ABC.2



Documents

No downloads available for this product

Accessories

Optional accessories

Tool holders with VDI shank

[Drill holding block D1", horizontally adjustable](#)

Product ID : 10935806

Previous product ID : W9990242

Drive not live	Cooling internal	Pressure 20 bar	Mounting D1"
reversible 180° no	X [mm] 23.55 (0.93")	Y [mm] -	Z [mm] 50 (1.97)
INDEX TRAUB products ABC • ABC.2			

[Drill holding block D25 \(0.98 "\)](#)

Product ID : 10159310

Previous product ID : W9990045

Drive not live	Cooling internal	Pressure 20 bar	Mounting D25
X [mm] 23.55 (0.93")	Y [mm] -	Z [mm] -	INDEX TRAUB products ABC • ABC.2

[Drill holding block D25 \(0.98 "\)](#)

Product ID : 10065358

Previous product ID : W9990243

Drive not live	Fixation VDI none	Cooling internal	Pressure 20 bar
Mounting D25	reversible 180° no	X [mm] 33.55 (1.32")	Y [mm] -
Z [mm] 50 (1.97)	INDEX TRAUB products ABC • ABC.2		

Other accessories

[SPRAY NOZZLE 14D/M6](#)

Product ID : 10358770

Previous product ID : 474550.0121

[Lens head screw](#)

Product ID : 10344546

Previous product ID : 410243.0406
