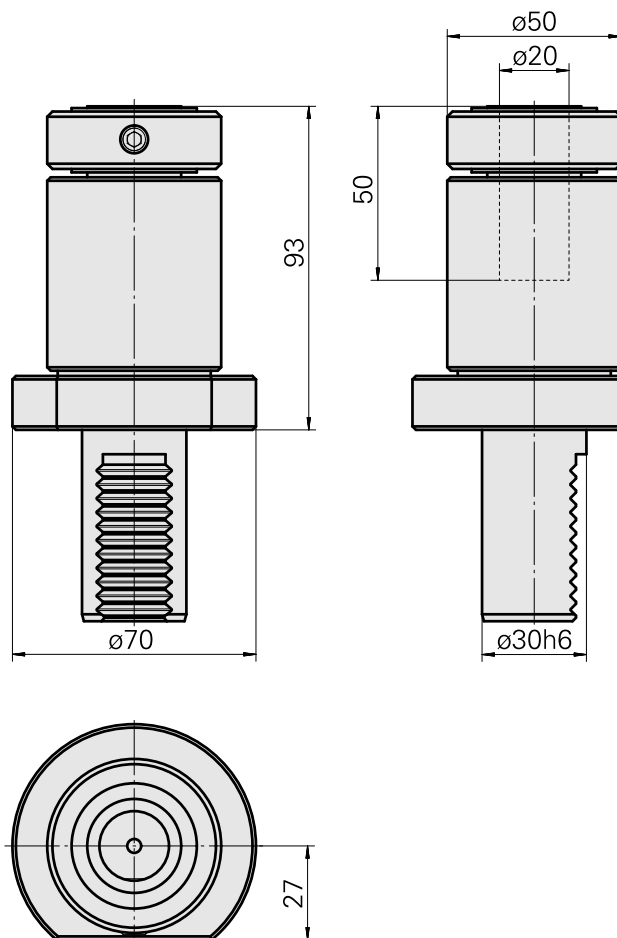
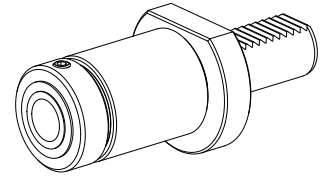


## Reaming tool holder VDI 30 D20 (0.79 "), self-centering

### Technical data

<b>Shank VDI</b>	VDI 30
<b>Drive</b>	not live
<b>Fixation VDI</b>	none
<b>Cooling</b>	internal
<b>Pressure</b>	40 bar
<b>Mounting</b>	D20
<b>reversible 180°</b>	no
<b>Data carrier</b>	check tool station bore
<b>X [mm]</b>	93 (3.66")
<b>Y [mm]</b>	-
<b>Z [mm]</b>	-
<b>INDEX TRAUB products</b>	V100 • V200 • V160C • V160G • V300



## Documents

No downloads available for this product

## Accessories

Optional accessories

### Other accessories

[Mounting sleeve with collar D20](#)

Product ID : 10063939

Previous product ID : W68510.04--

---