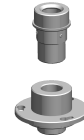


## Bush

### Technical data

<b>INDEX TRAUB products</b>	TNL20
<b>Function (Component)</b>	
<b>Spindle clearance</b>	24mm
<b>Bar loading magazine</b>	LNS EXPRESS 320 S2
<b>Machining side</b>	Main spindle
<b>Spindle drive</b>	Direct drive
<b>Material diameter</b>	9mm (0.35") • 10mm (0.39") • 11mm (0.43") • 12mm (0.47") • 13mm (0.51") • 14mm (0.55") • 15mm (0.59") • 16mm (0.63") • 17mm (0.67") • 18mm (0.71") • 19mm (0.75") • 20mm (0.79")



No 3-side view is currently available for this product

10300993  
802927

**INDEX**

---

## **Documents**

No downloads available for this product