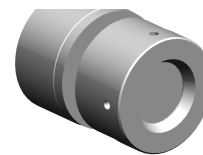


## Unscrewing device

### Technical data



#### INDEX TRAUB products

ABC • ABC65 • B400 • C100 • C200  
• G200.2 • G220 • TNK42/65 •  
TNX65/42 • TNA400.2 • ABC.2 •  
G220.3 • TNX200.3 • TNX220.3 •  
G200.3 • B400.3 • TNA400.3

#### Function (Component)

Unscrewing device

#### Bar loading magazine

INDEX MBL (2. Generation) 3200 •  
INDEX MBL (2. Generation) 4200 •  
MBL76 3200 • INDEX MBL76 4200

#### Material diameter

10mm (0.39") • 11mm (0.43") •  
12mm (0.47") • 13mm (0.51") •  
14mm (0.55") • 15mm (0.59") •  
16mm (0.63") • 17mm (0.67") •  
18mm (0.71") • 19mm (0.75") •  
20mm (0.79") • 21mm (0.83") •  
22mm (0.87") • 23mm (0.91") •  
24mm (0.94") • 25mm (0.98")

No 3-side view is currently available for this product

## **Documents**

No downloads available for this product