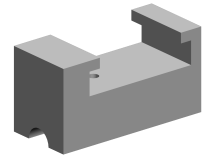


Bar guide 12mm

Technical data

| | |
|-----------------------------|-----------------------------|
| INDEX TRAUB products | TNL18 |
| Function (Component) | Bar guide |
| Spindle clearance | 21mm |
| Bar loading magazine | FMB minimag 20 |
| Machining side | Main spindle |
| Spindle drive | Direct drive • Belt drive |
| Material diameter | 10mm (0.39") • 11mm (0.43") |



No 3-side view is currently available for this product

10044533
781019

INDEX

Documents

No downloads available for this product