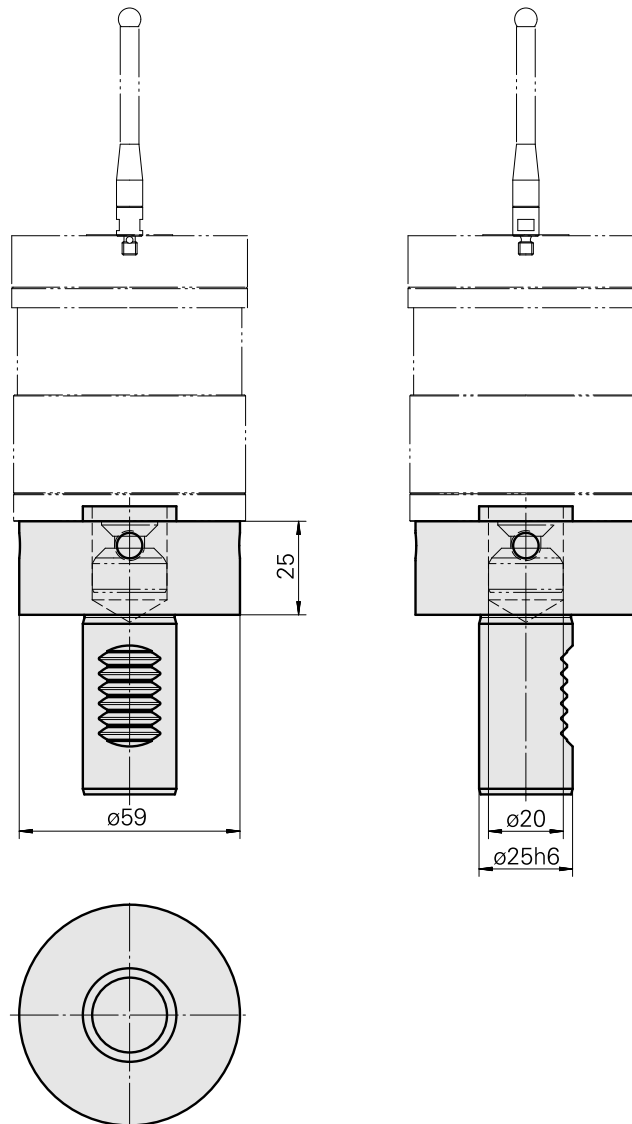


## Probe holder VDI 25 Renishaw D20

### Technical data

|                 |              |
|-----------------|--------------|
| Shank VDI       | VDI 25       |
| Drive           | not live     |
| Fixation VDI    | none         |
| Mounting        | Renishaw D20 |
| reversible 180° | no           |
| X [mm]          | 25 (0.98")   |
| Y [mm]          | -            |
| Z [mm]          | -            |



## Documents

No downloads available for this product

## Accessories

Required for operation

### [Probe holder](#)

Product ID : 12146926

Previous product ID :

---

### [Push-button insert](#)

Product ID : 12133466

Previous product ID :

---

### [Probe](#)

Product ID : 10338967

Previous product ID : 487542.1441

---

Optional accessories

### Other accessories

### [Case A-2033-7001](#)

Product ID : 10259626

Previous product ID : 487542.0911

---