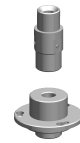


## Bush

### Technical data

<b>INDEX TRAUB products</b>	TNL20 • TNL20.2
<b>Function (Component)</b>	
<b>Spindle clearance</b>	24mm
<b>Bar loading magazine</b>	IEMCA Elite 220
<b>Machining side</b>	Main spindle
<b>Spindle drive</b>	Direct drive
<b>Material diameter</b>	2mm (0,08") • 3mm (0,12") • 4mm (0,16") • 5mm (0,20") • 6mm (0,24") • 7mm (0,28") • 8mm (0,31") • 9mm (0,35") • 10mm (0,39")



No 3-side view is currently available for this product

10922454  
802928

**INDEX**

---

## **Documents**

No downloads available for this product