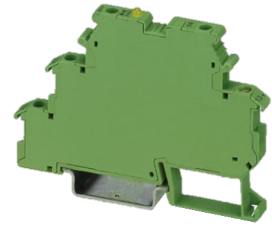


---

## OPTO MODULE DC/DC 3A #2941374

### Technical data

<b>Electrical assemblies</b>	Relay
<b>Length</b>	80 Millimeter
<b>Width</b>	6.2 Millimeter
<b>Height</b>	56 Millimeter
<b>Current</b>	3 Ampere
<b>Voltage</b>	24 Volt
<b>Voltage type</b>	DC=
<b>Switching function</b>	(1) NO contact



No 3-side view is currently available for this product

## **Documents**

No downloads available for this product