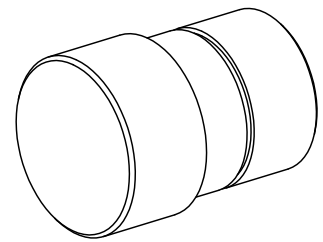


Guide bushing, 10,00 - 25,00 mm

Technical data

| | |
|-----------------------------|--|
| INDEX TRAUB products | ABC65 |
| Function (Component) | Guide bushing |
| Spindle clearance | 65mm • 42mm • 82mm |
| Bar loading magazine | INDEX MBL (2. Generation) 3200 • INDEX MBL (2. Generation) 4200 |
| Machining side | Main spindle |
| Material diameter | 10mm (0.39") • 11mm (0.43") • 12mm (0.47") • 13mm (0.51") • 14mm (0.55") • 15mm (0.59") • 16mm (0.63") • 17mm (0.67") • 18mm (0.71") • 19mm (0.75") • 20mm (0.79") • 21mm (0.83") • 22mm (0.87") • 23mm (0.91") • 24mm (0.94") • 25mm (0.98") |



No 3-side view is currently available for this product

Documents

No downloads available for this product