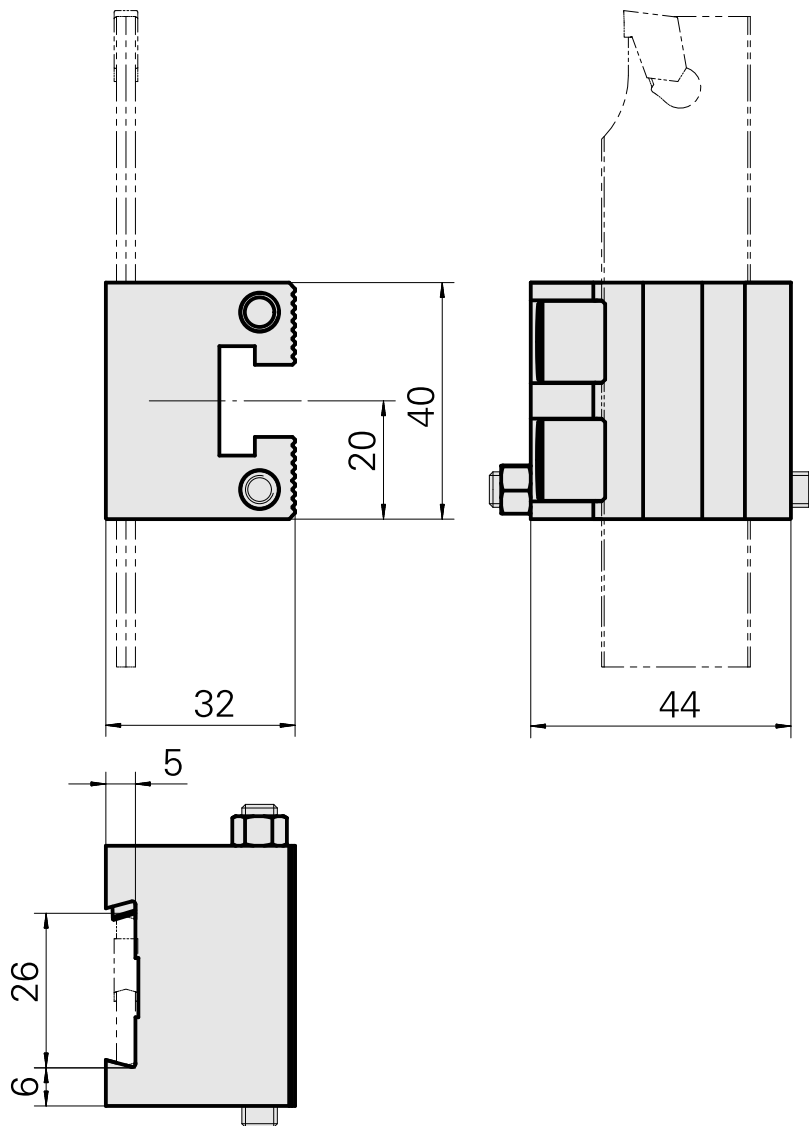
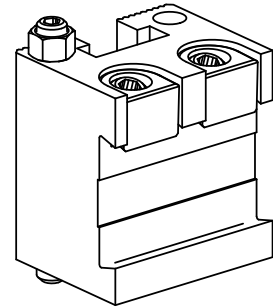


Grooving tool holding block Trapezoid 26, vertically adjustable

Technical data

| | |
|-----------------------------|---|
| Drive | not live |
| Mounting | Trapezoid 26x5 |
| X [mm] | 20 (0.79") |
| Y [mm] | – |
| Z [mm] | 32 (1.26) |
| INDEX TRAUB products | C42/65 • G160 • G300 • ABC • B400 • C100 • C200 • G200 • G200.2 • G220 • G250 • TNX65/42 • TNA400.2 • ABC.2 • G300.2 • G320.2 • B400.3 • TNA400.3 • G320.3 compact |



Documents

No downloads available for this product