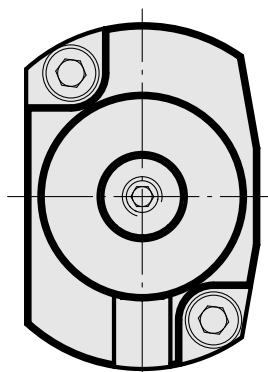
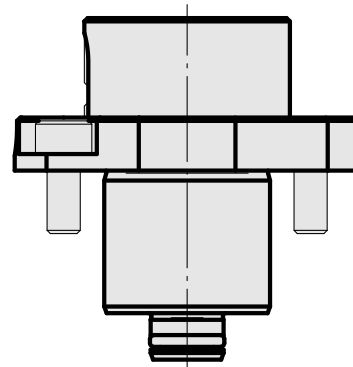
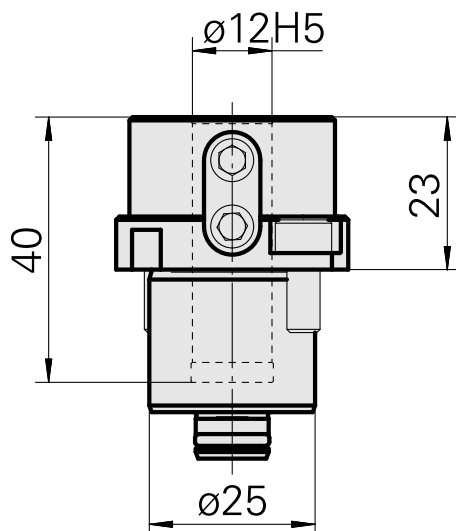


装夹形式 刀柄 25 D12

Technical data

刀柄KPS	刀柄 25
驱动装置	非动力式
冷却	内冷
夹具	D12
压力	80 bar, 可选项 内冷 120 bar
X [mm]	-
Y [mm]	-
Z [mm]	23
INDEX TRAUB产品	TNL20 • TNL32-11 compact • TNL20-11 • TNL32 compact • TNK40.2-10 • TNK40.2-8 • TNL20.2



Documents

No downloads available for this product

Accessories

Optional accessories

Other accessories

[Mounting sleeve with collar D12](#)

Product ID : 11060576

Previous product ID : W94280.21--
