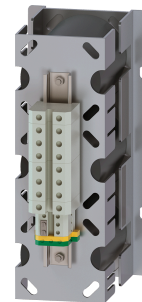


Strozzatore /induttore

Technical data

Electrical assemblies	Line choke
Length	555 Millimeter
Width	270 Millimeter
Height	75 Millimeter
Cross-section	35 Square millimeter
Current	67 Ampere
Voltage	480 Volt
Frequency	50 Hertz (1/second) • 60 Hertz (1/second)
Voltage type	AC~
Protection class	IP00



No 3-side view is currently available for this product

10643728
484280.0991

INDEX

Documents

No downloads available for this product