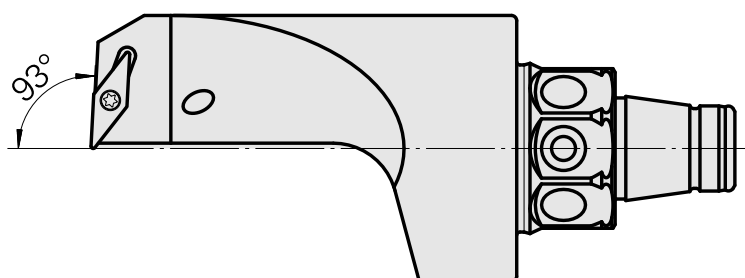
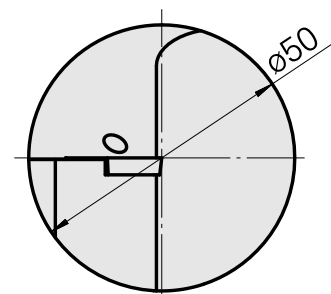
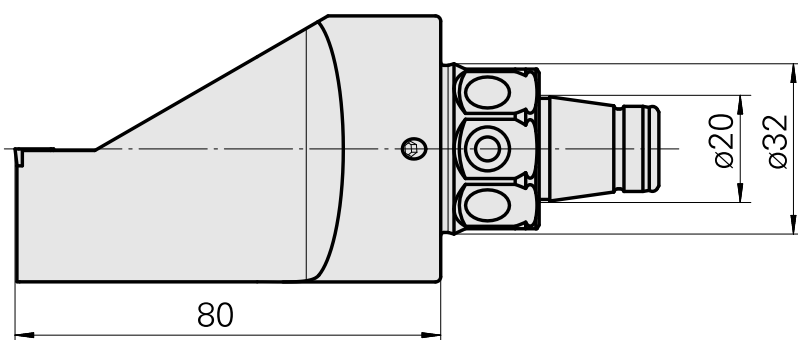
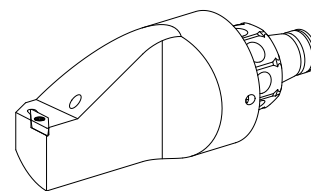


## WFB 32-20 per VC.. 1103.., destra, senza scanalatura pinza

### Caratteristiche tecniche

Categoria acces. portautensile	WFB 32-20
Attacco	per VC.. 1103..
Accessorio per cambio rapido	supporto portapezzo



## **Documenti**

Non sono disponibili download per questo prodotto