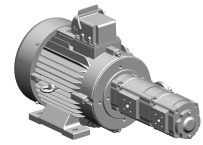


Pump assembly

Technical data

| | |
|------------------------------|----------------------|
| Electrical assemblies | Pump |
| Length | 603.8 Millimeter |
| Voltage | 400 Volt |
| Frequency | 60 Hertz (1/second) |
| Voltage type | AC~ |
| (Nominal) speed (rpm) | 1760 1/minute |
| Rated power W | 4000 Watt |
| Plug connection/type | Heavy-duty connector |
| Protection class | IP55 |



No 3-side view is currently available for this product

Documents

No downloads available for this product