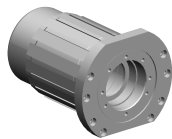


Stator

Technical features

Ext. manufacturer product line	Siemens
Electrical assemblies	Spindle
Ext. manufacturer product line	1FE
Length (mm)	138 Millimeter
Width (mm)	114 Millimeter
Voltage type	AC (alternating current)
Brake	no – unbraked



No 3-side view is currently available for this product

---

**Documents**

No downloads available for this product