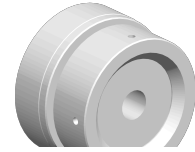


Unscrewing device

Technical features

INDEX TRAUB products

ABC • ABC65 • B400 • C100 • C200
• G200.2 • G220 • TNK42/65 •
TNX65/42 • TNA400.2 • ABC.2



Function (Component)

Unscrewing device

Spindle clearance

42 mm

Bar loading magazine

INDEX MBL (2. Generation) 3200 •
INDEX MBL (2. Generation) 4200

Material diameter

26 mm (1.02 ") • 27 mm (1.06 ") •
28 mm (1.1 ") • 29 mm (1.14 ") • 30
mm (1.18 ") • 31 mm (1.22 ") • 32
mm (1.26 ") • 33 mm (1.30 ") • 34
mm (1.34 ") • 35 mm (1.38 ") • 36
mm (1.42 ") • 37 mm (1.46 ") • 38
mm (1.50 ") • 39 mm (1.54 ") • 40
mm (1.57 ") • 41 mm (1.61 ") • 42
mm (1.65 ") • 43 mm (1.69 ") • 44
mm (1.73 ") • 45 mm (1.77 ") • 46
mm (1.81 ") • 47 mm (1.85 ") • 48
mm (1.89 ") • 49 mm (1.93 ") • 50
mm (1.97 ") • 51 mm (2.01 ") • 52
mm (2.05 ") • 53 mm (2.09 ") • 54
mm (2.13 ") • 55 mm (2.17 ") • 56
mm (2.20 ") • 57 mm (2.24 ") • 58
mm (2.28 ") • 59 mm (2.32 ") • 60
mm (2.36 ") • 61 mm (2.40 ") • 62
mm (2.44 ") • 63 mm (2.48 ") • 64
mm (2.52 ") • 65 mm (2.56 ")

No 3-side view is currently available for this product

Documents

No downloads available for this product