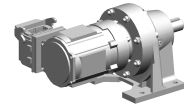


Motor

Technical data

Electrical assemblies	AC motor
Voltage	230 Volt • 400 Volt
Frequency	50 Hertz (1/second)
Voltage type	AC~
(Nominal) speed (rpm)	1400 1/minute
(Stall) torque [Nm]	150 Newton/meter
Plug connection/type	Undefined connector
Protection class	IP55
Brake	no – unbraked



No 3-side view is currently available for this product

10835426
481352.3601

INDEX

Documents

No downloads available for this product