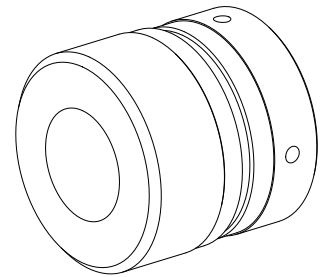


## Unscrewing device, 60 mm, 65 mm

### Technical features

<b>INDEX TRAUB products</b>	ABC • C200 • G200 • G220 • ABC.2
<b>Function (Component)</b>	Unscrewing device
<b>Spindle clearance</b>	60 mm • 65 mm
<b>Bar loading magazine</b>	INDEX MBL • INDEX MBF
<b>Clamping stroke</b>	7 mm (0.28 ") • 20 mm (0.79 ")
<b>Machining side</b>	Main spindle
<b>Machine number range</b>	6-digit machine number • 8-digit machine number
<b>Material diameter</b>	19 mm (0.75 ") • 20 mm (0.79 ") • 21 mm (0.83 ") • 22 mm (0.87 ") • 23 mm (0.91 ") • 24 mm (0.94 ") • 25 mm (0.98 ") • 26 mm (1.02 ") • 27 mm (1.06 ") • 28 mm (1.1 ") • 29 mm (1.14 ") • 30 mm (1.18 ")



No 3-side view is currently available for this product

## **Documents**

No downloads available for this product