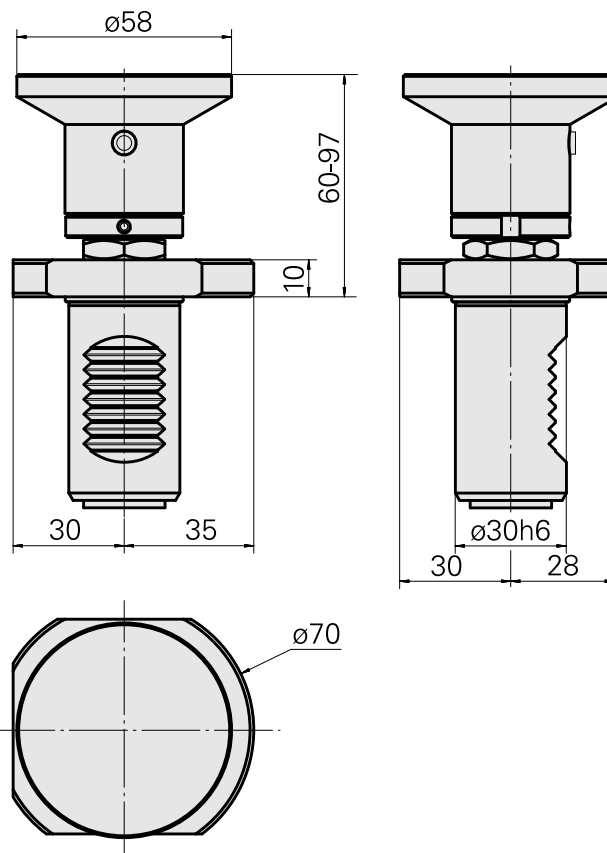
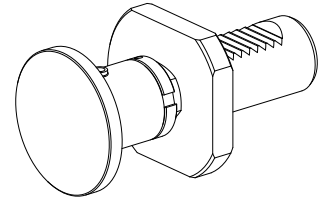


Bar stop VDI 30, adjustable, live

Technical data

Shank VDI	VDI 30
Drive	not live
Fixation VDI	none
reversable 180°	no
X [mm]	60 - 97 (2.36" - 3.82")
Y [mm]	-
Z [mm]	-
Tool turret type	Radial turret • Disk-type turret
INDEX TRAUB products	C42/65 • G160 • G300 • G400 • IT600 • TNX80 • ABC • C100 • C200 • G200 • G200.2 • G220 • G250 • R300 • TNX65/42 • TNA300 • B400 • B500 • TNA500.2 • TNA400.2 • ABC.2 • G220.3 • TNX220.3 • TNX200.3 • G200.3 • G320.3 compact • B400.3 • TNA400.3 • B500.3 • TNA500.3



Documents

No downloads available for this product