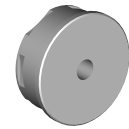


## Guide bushing,31,00 - 66,00 mm

### Technical data

<b>INDEX TRAUB products</b>	ABC • C200 • G200 • G220 • ABC.2
<b>Function (Component)</b>	Guide bushing
<b>Spindle clearance</b>	60mm • 65mm
<b>Bar loading magazine</b>	INDEX MBL • INDEX MBF
<b>Clamping stroke</b>	7mm (0.28") • 20mm (0.79")
<b>Machining side</b>	Main spindle
<b>Machine number range</b>	6-digit machine number • 8-digit machine number
<b>Material diameter</b>	31mm (1.22") • 32mm (1.26") • 33mm (1.30") • 34mm (1.34") • 35mm (1.38") • 36mm (1.42") • 37mm (1.46") • 38mm (1.50") • 39mm (1.54") • 40mm (1.57") • 41mm (1.61") • 42mm (1.65") • 43mm (1.69") • 44mm (1.73") • 45mm (1.77") • 46mm (1.81") • 47mm (1.85") • 48mm (1.89") • 49mm (1.93") • 50mm (1.97") • 51mm (2.01") • 52mm (2.05") • 53mm (2.09") • 54mm (2.13") • 55mm (2.17") • 56mm (2.20") • 57mm (2.24") • 58mm (2.28") • 59mm (2.32") • 60mm (2.36") • 61mm (2.40") • 62mm (2.44") • 63mm (2.48") • 64mm (2.52") • 65mm (2.56") • 66mm (2.60")



No 3-side view is currently available for this product

## **Documents**

No downloads available for this product