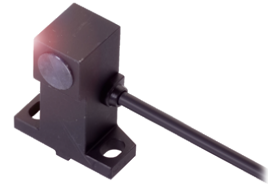


Proximity pick up

Technical data

Electrical assemblies	Proximity sensor
Length (mm)	29 Millimeter
Cross-section	0.14 Square millimeter
Voltage	24 Volt
Voltage type	DC (direct current)
Protection class	IP67
Measuring range max. (mm)	5 Millimeter



No 3-side view is currently available for this product

Documents

No downloads available for this product