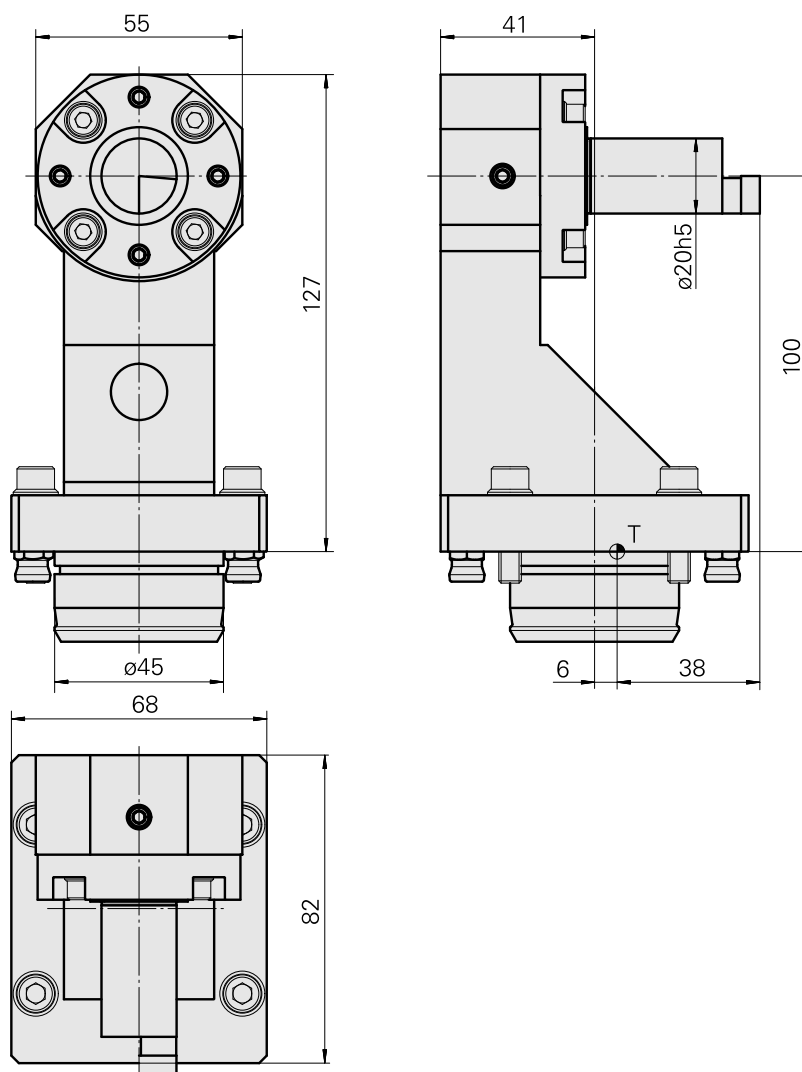
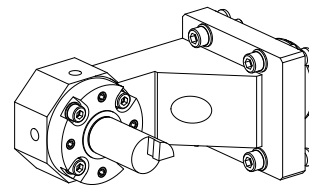


## Impostazione portautensili KPS 45

### Caratteristiche tecniche

<b>Gambo KPS</b>	KPS 45
<b>Azionamento</b>	non azionato
<b>ruotabile di 180°</b>	sì
<b>X [mm]</b>	100
<b>Y [mm]</b>	0
<b>Z [mm]</b>	44
<b>Prodotti INDEX TRAUB</b>	TNL20 • TNL20-11 • TNL20-9 • TNL20-9B • TNK40.2-8 • TNK40.2-10 • TNL32 • TNL32 compact • TNL32-11 • TNL32-11 compact • TNL20.2



## **Documenti**

Non sono disponibili download per questo prodotto