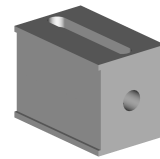


## Bar guide 18mm

### Technical data

<b>INDEX TRAUB products</b>	TNL32
<b>Function (Component)</b>	Bar guide
<b>Spindle clearance</b>	32mm
<b>Bar loading magazine</b>	FMB LSK38
<b>Machining side</b>	Main spindle
<b>Spindle drive</b>	Direct drive • Belt drive
<b>Material diameter</b>	16mm (0.63") • 17mm (0.67")



No 3-side view is currently available for this product

10893015  
802373

**INDEX**

---

## **Documents**

No downloads available for this product