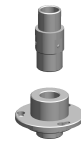


Bussola

Technical data

INDEX TRAUB products	TNL20 • TNL20.2
Function (Component)	
Spindle clearance	24mm
Bar loading magazine	IEMCA Elite 220
Machining side	Main spindle
Spindle drive	Direct drive
Material diameter	11mm (0.43") • 12mm (0.47") • 13mm (0.51") • 14mm (0.55") • 15mm (0.59") • 16mm (0.63") • 17mm (0.67") • 18mm (0.71") • 19mm (0.75") • 20mm (0.79")



No 3-side view is currently available for this product

10298120
802929

INDEX

Documents

No downloads available for this product