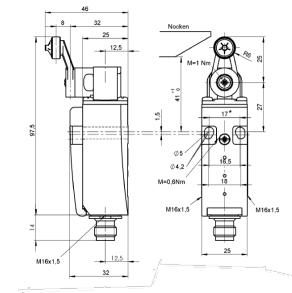


Switch

Technical data

Electrical assemblies	Safety switch
Length	97.5 Millimeter
Width	25 Millimeter
Height	32 Millimeter
Current	0.001 Ampere
Voltage	24 Volt
Voltage type	DC=
Protection class	IP67



No 3-side view is currently available for this product

10774512
486405.2101

INDEX

Documents

No downloads available for this product