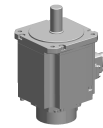


Motor

Technical data

Electrical assemblies	Servomotor
Length	140.5 Millimeter
Cross-section	130 Square millimeter
Current	1.8 Ampere
Voltage	400 Volt
Voltage type	AC~
(Nominal) speed (rpm)	3000 1/minute
(Stall) torque [Nm]	5.9 Newton/meter
Protection class	IP67
Brake	yes - braked



No 3-side view is currently available for this product

10009996
223644

INDEX

Documents

No downloads available for this product