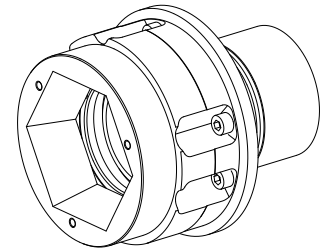


Spannfutter-TOPlus D65

Technical data

Produkte INDEX TRAUB	C200 • R200 • ABC • TNK42/65 • ABC.2
Spindeldurchlass	65mm
Bearbeitungsseite	Gegenspindel
Fremdhersteller Produktmerkmal	Modular
Hersteller Produktlinie	TOPlus Futter
Spindelaufnahme	AP140
Spannmittelbaugröße	SK65
Hersteller Produktlinie	Hainbuch



No 3-side view is currently available for this product

Documents

No downloads available for this product

Accessories

Optional accessories

HAINBUCH Markenshop

[Clamping head TOP65 G D=55,00mm](#)

Product ID : 10711577

Previous product ID : 900565.G550

Clamping device size SK65	manufacturer product line TOPlus chuck	Clamping type smooth	Nominal diameter (mm) 55 Millimeter
Clamping method External clamping	manufacturer product line Hainbuch		

[Clamping head TOP65 G D=56,00mm](#)

Product ID : 10688076

Previous product ID : 900565.G560

Clamping device size SK65	manufacturer product line TOPlus chuck	Clamping type smooth	Nominal diameter (mm) 56 Millimeter
Clamping method External clamping	manufacturer product line Hainbuch		

[Clamping head TOP65 G D=57,00mm](#)

Product ID : 10484931

Previous product ID : 900565.G570

Clamping device size SK65	manufacturer product line TOPlus chuck	Clamping type smooth	Nominal diameter (mm) 57 Millimeter
Clamping method External clamping	manufacturer product line Hainbuch		

Clamping head TOP65 G D=58,00mm

Product ID : 10636437

Previous product ID : 900565.G580

Clamping device size SK65	manufacturer product line TOPlus chuck	Clamping type smooth	Nominal diameter (mm) 58 Millimeter
Clamping method External clamping	manufacturer product line Hainbuch		

Clamping head TOP65 G D=59,00mm

Product ID : 10691089

Previous product ID : 900565.G590

Clamping device size SK65	manufacturer product line TOPlus chuck	Clamping type smooth	Nominal diameter (mm) 59 Millimeter
Clamping method External clamping	manufacturer product line Hainbuch		

Clamping head TOP65 G D=60,00mm

Product ID : 10633581

Previous product ID : 900565.G600

Clamping device size SK65	manufacturer product line TOPlus chuck	Clamping type smooth	Nominal diameter (mm) 60 Millimeter
Clamping method External clamping	manufacturer product line Hainbuch		

Clamping head TOP65 G D=61,00mm

Product ID : 10296772

Previous product ID : 900565.G610

Clamping device size SK65	manufacturer product line TOPlus chuck	Clamping type smooth	Nominal diameter (mm) 61 Millimeter
Clamping method External clamping	manufacturer product line Hainbuch		

Clamping head TOP65 G D=62,00mm

Product ID : 10416833

Previous product ID : 900565.G620

Clamping device size SK65	manufacturer product line TOPlus chuck	Clamping type smooth	Nominal diameter (mm) 62 Millimeter
Clamping method External clamping	manufacturer product line Hainbuch		

Clamping head TOP65 G D=63,00mm

Product ID : 10373217

Previous product ID : 900565.G630

Clamping device size SK65	manufacturer product line TOPlus chuck	Clamping type smooth	Nominal diameter (mm) 63 Millimeter
Clamping method External clamping	manufacturer product line Hainbuch		

Clamping head TOP65 G D=64,00mm

Product ID : 10524923

Previous product ID : 900565.G640

Clamping device size SK65	manufacturer product line TOPlus chuck	Clamping type smooth	Nominal diameter (mm) 64 Millimeter
Clamping method External clamping	manufacturer product line Hainbuch		

Clamping head TOP65 G D=65,00mm

Product ID : 10612390

Previous product ID : 900565.G650

Clamping device size SK65	manufacturer product line TOPlus chuck	Clamping type smooth	Nominal diameter (mm) 65 Millimeter
Clamping method External clamping	manufacturer product line Hainbuch		

Clamping head TOP65 HSW D=8,00mm

Product ID : 10899243

Previous product ID : 900565.W080

Clamping device size SK65	manufacturer product line TOPlus chuck	Clamping type Soft for custom boring	Nominal diameter (mm) 8 Millimeter
Clamping method External clamping	manufacturer product line Hainbuch		

Clamping head TOP65 HSW D=20,00mm

Product ID : 10324949

Previous product ID : 900565.W200

Clamping device size SK65	manufacturer product line TOPlus chuck	Clamping type Soft for custom boring	Nominal diameter (mm) 20 Millimeter
Clamping method External clamping	manufacturer product line Hainbuch		

Clamping head TOP65 HSW D=40,00mm

Product ID : 10322862

Previous product ID : 900565.W400

Clamping device size SK65	manufacturer product line TOPlus chuck	Clamping type Soft for custom boring	Nominal diameter (mm) 40 Millimeter
Clamping method External clamping	manufacturer product line Hainbuch		

Spannkopf TOP65 D=5,00mm

Product ID : 10060347

Previous product ID : 900565.R050

Clamping device size SK65	manufacturer product line TOPlus chuck	Clamping type grooved	Nominal diameter (mm) 5 Millimeter
Clamping method External clamping	manufacturer product line Hainbuch		

Spannkopf TOP65 D=6,00mm

Product ID : 10912119

Previous product ID : 900565.R060

Clamping device size SK65	manufacturer product line TOPlus chuck	Clamping type grooved	Nominal diameter (mm) 6 Millimeter
Clamping method External clamping	manufacturer product line Hainbuch		

Spannkopf TOP65 D=7,00mm

Product ID : 10379194

Previous product ID : 900565.R070

Clamping device size SK65	manufacturer product line TOPlus chuck	Clamping type grooved	Nominal diameter (mm) 7 Millimeter
Clamping method External clamping	manufacturer product line Hainbuch		

Spannkopf TOP65 D=8,00mm

Product ID : 10390927

Previous product ID : 900565.R080

Clamping device size SK65	manufacturer product line TOPlus chuck	Clamping type grooved	Nominal diameter (mm) 8 Millimeter
Clamping method External clamping	manufacturer product line Hainbuch		

Spannkopf TOP65 D=9,00mm

Product ID : 11020883

Previous product ID : 900565.R090

Clamping device size SK65	manufacturer product line TOPlus chuck	Clamping type grooved	Nominal diameter (mm) 9 Millimeter
Clamping method External clamping	manufacturer product line Hainbuch		

Spannkopf TOP65 D=10,00mm

Product ID : 10620887

Previous product ID : 900565.R100

Clamping device size SK65	manufacturer product line TOPlus chuck	Clamping type grooved	Nominal diameter (mm) 10 Millimeter
Clamping method External clamping	manufacturer product line Hainbuch		

Spannkopf TOP65 D=11,00mm

Product ID : 10426765

Previous product ID : 900565.R110

Clamping device size SK65	manufacturer product line TOPlus chuck	Clamping type grooved	Nominal diameter (mm) 11 Millimeter
Clamping method External clamping	manufacturer product line Hainbuch		

Spannkopf TOP65 D=12,00mm

Product ID : 10770041

Previous product ID : 900565.R120

Clamping device size SK65	manufacturer product line TOPlus chuck	Clamping type grooved	Nominal diameter (mm) 12 Millimeter
Clamping method External clamping	manufacturer product line Hainbuch		

Spannkopf TOP65 D=13,00mm

Product ID : 10233324

Previous product ID : 900565.R130

Clamping device size SK65	manufacturer product line TOPlus chuck	Clamping type grooved	Nominal diameter (mm) 13 Millimeter
Clamping method External clamping	manufacturer product line Hainbuch		

Spannkopf TOP65 D=14,00mm

Product ID : 10381736

Previous product ID : 900565.R140

Clamping device size SK65	manufacturer product line TOPlus chuck	Clamping type grooved	Nominal diameter (mm) 14 Millimeter
Clamping method External clamping	manufacturer product line Hainbuch		

Spannkopf TOP65 D=15,00mm

Product ID : 10565124

Previous product ID : 900565.R150

Clamping device size SK65	manufacturer product line TOPlus chuck	Clamping type grooved	Nominal diameter (mm) 15 Millimeter
Clamping method External clamping	manufacturer product line Hainbuch		

Spannkopf TOP65 D=16,00mm

Product ID : 10490132

Previous product ID : 900565.R160

Clamping device size SK65	manufacturer product line TOPlus chuck	Clamping type grooved	Nominal diameter (mm) 16 Millimeter
Clamping method External clamping	manufacturer product line Hainbuch		

Spannkopf TOP65 D=17,00mm

Product ID : 11012494

Previous product ID : 900565.R170

Clamping device size SK65	manufacturer product line TOPlus chuck	Clamping type grooved	Nominal diameter (mm) 17 Millimeter
Clamping method External clamping	manufacturer product line Hainbuch		

Spannkopf TOP65 D=18,00mm

Product ID : 10159550

Previous product ID : 900565.R180

Clamping device size SK65	manufacturer product line TOPlus chuck	Clamping type grooved	Nominal diameter (mm) 18 Millimeter
Clamping method External clamping	manufacturer product line Hainbuch		

Spannkopf TOP65 D=19,00mm

Product ID : 11030824

Previous product ID : 900565.R190

Clamping device size SK65	manufacturer product line TOPlus chuck	Clamping type grooved	Nominal diameter (mm) 19 Millimeter
Clamping method External clamping	manufacturer product line Hainbuch		

Spannkopf TOP65 D=20,00mm

Product ID : 10262515

Previous product ID : 900565.R200

Clamping device size SK65	manufacturer product line TOPlus chuck	Clamping type grooved	Nominal diameter (mm) 20 Millimeter
Clamping method External clamping	manufacturer product line Hainbuch		

Spannkopf TOP65 D=21,00mm

Product ID : 10122419

Previous product ID : 900565.R210

Clamping device size SK65	manufacturer product line TOPlus chuck	Clamping type grooved	Nominal diameter (mm) 21 Millimeter
Clamping method External clamping	manufacturer product line Hainbuch		

Spannkopf TOP65 D=22,00mm

Product ID : 10937055

Previous product ID : 900565.R220

Clamping device size SK65	manufacturer product line TOPlus chuck	Clamping type grooved	Nominal diameter (mm) 22 Millimeter
Clamping method External clamping	manufacturer product line Hainbuch		

Spannkopf TOP65 D=23,00mm

Product ID : 10035683

Previous product ID : 900565.R230

Clamping device size SK65	manufacturer product line TOPlus chuck	Clamping type grooved	Nominal diameter (mm) 23 Millimeter
Clamping method External clamping	manufacturer product line Hainbuch		

Spannkopf TOP65 D=24,00mm

Product ID : 10870713

Previous product ID : 900565.R240

Clamping device size SK65	manufacturer product line TOPlus chuck	Clamping type grooved	Nominal diameter (mm) 24 Millimeter
Clamping method External clamping	manufacturer product line Hainbuch		

Spannkopf TOP65 D=25,00mm

Product ID : 10818470

Previous product ID : 900565.R250

Clamping device size SK65	manufacturer product line TOPlus chuck	Clamping type grooved	Nominal diameter (mm) 25 Millimeter
Clamping method External clamping	manufacturer product line Hainbuch		

Spannkopf TOP65 D=26,00mm

Product ID : 11023414

Previous product ID : 900565.R260

Clamping device size SK65	manufacturer product line TOPlus chuck	Clamping type grooved	Nominal diameter (mm) 26 Millimeter
Clamping method External clamping	manufacturer product line Hainbuch		

Spannkopf TOP65 D=27,00mm

Product ID : 10198813

Previous product ID : 900565.R270

Clamping device size SK65	manufacturer product line TOPlus chuck	Clamping type grooved	Nominal diameter (mm) 27 Millimeter
Clamping method External clamping	manufacturer product line Hainbuch		

Spannkopf TOP65 D=28,00mm

Product ID : 11054390

Previous product ID : 900565.R280

Clamping device size SK65	manufacturer product line TOPlus chuck	Clamping type grooved	Nominal diameter (mm) 28 Millimeter
Clamping method External clamping	manufacturer product line Hainbuch		

Spannkopf TOP65 D=29,00mm

Product ID : 10568257

Previous product ID : 900565.R290

Clamping device size SK65	manufacturer product line TOPlus chuck	Clamping type grooved	Nominal diameter (mm) 29 Millimeter
Clamping method External clamping	manufacturer product line Hainbuch		

Spannkopf TOP65 D=30,00mm

Product ID : 10166609

Previous product ID : 900565.R300

Clamping device size SK65	manufacturer product line TOPlus chuck	Clamping type grooved	Nominal diameter (mm) 30 Millimeter
Clamping method External clamping	manufacturer product line Hainbuch		

Spannkopf TOP65 D=31,00mm

Product ID : 10364473

Previous product ID : 900565.R310

Clamping device size SK65	manufacturer product line TOPlus chuck	Clamping type grooved	Nominal diameter (mm) 31 Millimeter
Clamping method External clamping	manufacturer product line Hainbuch		

Spannkopf TOP65 D=32,00mm

Product ID : 10700044

Previous product ID : 900565.R320

Clamping device size SK65	manufacturer product line TOPlus chuck	Clamping type grooved	Nominal diameter (mm) 32 Millimeter
Clamping method External clamping	manufacturer product line Hainbuch		

Spannkopf TOP65 D=33,00mm

Product ID : 10525637

Previous product ID : 900565.R330

Clamping device size SK65	manufacturer product line TOPlus chuck	Clamping type grooved	Nominal diameter (mm) 33 Millimeter
Clamping method External clamping	manufacturer product line Hainbuch		

Spannkopf TOP65 D=34,00mm

Product ID : 10830038

Previous product ID : 900565.R340

Clamping device size SK65	manufacturer product line TOPlus chuck	Clamping type grooved	Nominal diameter (mm) 34 Millimeter
Clamping method External clamping	manufacturer product line Hainbuch		

Spannkopf TOP65 D=35,00mm

Product ID : 10185407

Previous product ID : 900565.R350

Clamping device size SK65	manufacturer product line TOPlus chuck	Clamping type grooved	Nominal diameter (mm) 35 Millimeter
Clamping method External clamping	manufacturer product line Hainbuch		

Spannkopf TOP65 D=36,00mm

Product ID : 10012095

Previous product ID : 900565.R360

Clamping device size SK65	manufacturer product line TOPlus chuck	Clamping type grooved	Nominal diameter (mm) 36 Millimeter
Clamping method External clamping	manufacturer product line Hainbuch		

Spannkopf TOP65 D=37,00mm

Product ID : 10692144

Previous product ID : 900565.R370

Clamping device size SK65	manufacturer product line TOPlus chuck	Clamping type grooved	Nominal diameter (mm) 37 Millimeter
Clamping method External clamping	manufacturer product line Hainbuch		

Spannkopf TOP65 D=38,00mm

Product ID : 10006264

Previous product ID : 900565.R380

Clamping device size SK65	manufacturer product line TOPlus chuck	Clamping type grooved	Nominal diameter (mm) 38 Millimeter
Clamping method External clamping	manufacturer product line Hainbuch		

Spannkopf TOP65 D=39,00mm

Product ID : 10590728

Previous product ID : 900565.R390

Clamping device size SK65	manufacturer product line TOPlus chuck	Clamping type grooved	Nominal diameter (mm) 39 Millimeter
Clamping method External clamping	manufacturer product line Hainbuch		

Spannkopf TOP65 D=40,00mm

Product ID : 10635627

Previous product ID : 900565.R400

Clamping device size SK65	manufacturer product line TOPlus chuck	Clamping type grooved	Nominal diameter (mm) 40 Millimeter
Clamping method External clamping	manufacturer product line Hainbuch		

Spannkopf TOP65 D=41,00mm

Product ID : 10983711

Previous product ID : 900565.R410

Clamping device size SK65	manufacturer product line TOPlus chuck	Clamping type grooved	Nominal diameter (mm) 41 Millimeter
Clamping method External clamping	manufacturer product line Hainbuch		

Spannkopf TOP65 D=42,00mm

Product ID : 10739993

Previous product ID : 900565.R420

Clamping device size SK65	manufacturer product line TOPlus chuck	Clamping type grooved	Nominal diameter (mm) 42 Millimeter
Clamping method External clamping	manufacturer product line Hainbuch		

Spannkopf TOP65 D=43,00mm

Product ID : 10371260

Previous product ID : 900565.R430

Clamping device size SK65	manufacturer product line TOPlus chuck	Clamping type grooved	Nominal diameter (mm) 43 Millimeter
Clamping method External clamping	manufacturer product line Hainbuch		

Spannkopf TOP65 D=44,00mm

Product ID : 10060891

Previous product ID : 900565.R440

Clamping device size SK65	manufacturer product line TOPlus chuck	Clamping type grooved	Nominal diameter (mm) 44 Millimeter
Clamping method External clamping	manufacturer product line Hainbuch		

Spannkopf TOP65 D=45,00mm

Product ID : 10413148

Previous product ID : 900565.R450

Clamping device size SK65	manufacturer product line TOPlus chuck	Clamping type grooved	Nominal diameter (mm) 45 Millimeter
Clamping method External clamping	manufacturer product line Hainbuch		

Spannkopf TOP65 D=46,00mm

Product ID : 10025625

Previous product ID : 900565.R460

Clamping device size SK65	manufacturer product line TOPlus chuck	Clamping type grooved	Nominal diameter (mm) 46 Millimeter
Clamping method External clamping	manufacturer product line Hainbuch		

Spannkopf TOP65 D=47,00mm

Product ID : 10123645

Previous product ID : 900565.R470

Clamping device size SK65	manufacturer product line TOPlus chuck	Clamping type grooved	Nominal diameter (mm) 47 Millimeter
Clamping method External clamping	manufacturer product line Hainbuch		

Spannkopf TOP65 D=48,00mm

Product ID : 10622730

Previous product ID : 900565.R480

Clamping device size SK65	manufacturer product line TOPlus chuck	Clamping type grooved	Nominal diameter (mm) 48 Millimeter
Clamping method External clamping	manufacturer product line Hainbuch		

Spannkopf TOP65 D=49,00mm

Product ID : 10644964

Previous product ID : 900565.R490

Clamping device size SK65	manufacturer product line TOPlus chuck	Clamping type grooved	Nominal diameter (mm) 49 Millimeter
Clamping method External clamping	manufacturer product line Hainbuch		

Spannkopf TOP65 D=50,00mm

Product ID : 10589962

Previous product ID : 900565.R500

Clamping device size SK65	manufacturer product line TOPlus chuck	Clamping type grooved	Nominal diameter (mm) 50 Millimeter
Clamping method External clamping	manufacturer product line Hainbuch		

Spannkopf TOP65 D=51,00mm

Product ID : 10952620

Previous product ID : 900565.R510

Clamping device size SK65	manufacturer product line TOPlus chuck	Clamping type grooved	Nominal diameter (mm) 51 Millimeter
Clamping method External clamping	manufacturer product line Hainbuch		

Spannkopf TOP65 D=52,00mm

Product ID : 10756334

Previous product ID : 900565.R520

Clamping device size SK65	manufacturer product line TOPlus chuck	Clamping type grooved	Nominal diameter (mm) 52 Millimeter
Clamping method External clamping	manufacturer product line Hainbuch		

Spannkopf TOP65 D=53,00mm

Product ID : 10156585

Previous product ID : 900565.R530

Clamping device size SK65	manufacturer product line TOPlus chuck	Clamping type grooved	Nominal diameter (mm) 53 Millimeter
Clamping method External clamping	manufacturer product line Hainbuch		

Spannkopf TOP65 D=54,00mm

Product ID : 10452755

Previous product ID : 900565.R540

Clamping device size SK65	manufacturer product line TOPlus chuck	Clamping type grooved	Nominal diameter (mm) 54 Millimeter
Clamping method External clamping	manufacturer product line Hainbuch		

Spannkopf TOP65 D=55,00mm

Product ID : 10166680

Previous product ID : 900565.R550

Clamping device size SK65	manufacturer product line TOPlus chuck	Clamping type grooved	Nominal diameter (mm) 55 Millimeter
Clamping method External clamping	manufacturer product line Hainbuch		

Spannkopf TOP65 D=56,00mm

Product ID : 10265563

Previous product ID : 900565.R560

Clamping device size SK65	manufacturer product line TOPlus chuck	Clamping type grooved	Nominal diameter (mm) 56 Millimeter
Clamping method External clamping	manufacturer product line Hainbuch		

Spannkopf TOP65 D=57,00mm

Product ID : 10558562

Previous product ID : 900565.R570

Clamping device size SK65	manufacturer product line TOPlus chuck	Clamping type grooved	Nominal diameter (mm) 57 Millimeter
Clamping method External clamping	manufacturer product line Hainbuch		

Spannkopf TOP65 D=58,00mm

Product ID : 10784846

Previous product ID : 900565.R580

Clamping device size SK65	manufacturer product line TOPlus chuck	Clamping type grooved	Nominal diameter (mm) 58 Millimeter
Clamping method External clamping	manufacturer product line Hainbuch		

Spannkopf TOP65 D=59,00mm

Product ID : 11058674

Previous product ID : 900565.R590

Clamping device size SK65	manufacturer product line TOPlus chuck	Clamping type grooved	Nominal diameter (mm) 59 Millimeter
Clamping method External clamping	manufacturer product line Hainbuch		

Spannkopf TOP65 D=60,00mm

Product ID : 10628492

Previous product ID : 900565.R600

Clamping device size SK65	manufacturer product line TOPlus chuck	Clamping type grooved	Nominal diameter (mm) 60 Millimeter
Clamping method External clamping	manufacturer product line Hainbuch		

Spannkopf TOP65 D=61,00mm

Product ID : 10001489

Previous product ID : 900565.R610

Clamping device size SK65	manufacturer product line TOPlus chuck	Clamping type grooved	Nominal diameter (mm) 61 Millimeter
Clamping method External clamping	manufacturer product line Hainbuch		

Spannkopf TOP65 D=62,00mm

Product ID : 10744844

Previous product ID : 900565.R620

Clamping device size SK65	manufacturer product line TOPlus chuck	Clamping type grooved	Nominal diameter (mm) 62 Millimeter
Clamping method External clamping	manufacturer product line Hainbuch		

Spannkopf TOP65 D=63,00mm

Product ID : 10013281

Previous product ID : 900565.R630

Clamping device size SK65	manufacturer product line TOPlus chuck	Clamping type grooved	Nominal diameter (mm) 63 Millimeter
Clamping method External clamping	manufacturer product line Hainbuch		

Spannkopf TOP65 D=64,00mm

Product ID : 10468856

Previous product ID : 900565.R640

Clamping device size SK65	manufacturer product line TOPlus chuck	Clamping type grooved	Nominal diameter (mm) 64 Millimeter
Clamping method External clamping	manufacturer product line Hainbuch		

Spannkopf TOP65 D=65,00mm

Product ID : 10372670

Previous product ID : 900565.R650

Clamping device size SK65	manufacturer product line TOPlus chuck	Clamping type grooved	Nominal diameter (mm) 65 Millimeter
Clamping method External clamping	manufacturer product line Hainbuch		

[Spannkopf TOP65 G D=5,00mm](#)

Product ID : 10542192

Previous product ID : 900565.G050

Clamping device size SK65	manufacturer product line TOPlus chuck	Clamping type smooth	Nominal diameter (mm) 5 Millimeter
Clamping method External clamping	manufacturer product line Hainbuch		

[Spannkopf TOP65 G D=6,00mm](#)

Product ID : 10974591

Previous product ID : 900565.G060

Clamping device size SK65	manufacturer product line TOPlus chuck	Clamping type smooth	Nominal diameter (mm) 6 Millimeter
Clamping method External clamping	manufacturer product line Hainbuch		

[Spannkopf TOP65 G D=7,00mm](#)

Product ID : 10015322

Previous product ID : 900565.G070

Clamping device size SK65	manufacturer product line TOPlus chuck	Clamping type smooth	Nominal diameter (mm) 7 Millimeter
Clamping method External clamping	manufacturer product line Hainbuch		

[Spannkopf TOP65 G D=8,00mm](#)

Product ID : 10190456

Previous product ID : 900565.G080

Clamping device size SK65	manufacturer product line TOPlus chuck	Clamping type smooth	Nominal diameter (mm) 8 Millimeter
Clamping method External clamping	manufacturer product line Hainbuch		

Spannkopf TOP65 G D=9,00mm

Product ID : 10191300

Previous product ID : 900565.G090

Clamping device size SK65	manufacturer product line TOPlus chuck	Clamping type smooth	Nominal diameter (mm) 9 Millimeter
Clamping method External clamping	manufacturer product line Hainbuch		

Spannkopf TOP65 G D=10,00mm

Product ID : 10224878

Previous product ID : 900565.G100

Clamping device size SK65	manufacturer product line TOPlus chuck	Clamping type smooth	Nominal diameter (mm) 10 Millimeter
Clamping method External clamping	manufacturer product line Hainbuch		

Spannkopf TOP65 G D=11,00mm

Product ID : 11077424

Previous product ID : 900565.G110

Clamping device size SK65	manufacturer product line TOPlus chuck	Clamping type smooth	Nominal diameter (mm) 11 Millimeter
Clamping method External clamping	manufacturer product line Hainbuch		

Spannkopf TOP65 G D=12,00mm

Product ID : 10661028

Previous product ID : 900565.G120

Clamping device size SK65	manufacturer product line TOPlus chuck	Clamping type smooth	Nominal diameter (mm) 12 Millimeter
Clamping method External clamping	manufacturer product line Hainbuch		

Spannkopf TOP65 G D=13,00mm

Product ID : 10866644

Previous product ID : 900565.G130

Clamping device size SK65	manufacturer product line TOPlus chuck	Clamping type smooth	Nominal diameter (mm) 13 Millimeter
Clamping method External clamping	manufacturer product line Hainbuch		

Spannkopf TOP65 G D=14,00mm

Product ID : 10085252

Previous product ID : 900565.G140

Clamping device size SK65	manufacturer product line TOPlus chuck	Clamping type smooth	Nominal diameter (mm) 14 Millimeter
Clamping method External clamping	manufacturer product line Hainbuch		

Spannkopf TOP65 G D=15,00mm

Product ID : 10387910

Previous product ID : 900565.G150

Clamping device size SK65	manufacturer product line TOPlus chuck	Clamping type smooth	Nominal diameter (mm) 15 Millimeter
Clamping method External clamping	manufacturer product line Hainbuch		

Spannkopf TOP65 G D=16,00mm

Product ID : 10216820

Previous product ID : 900565.G160

Clamping device size SK65	manufacturer product line TOPlus chuck	Clamping type smooth	Nominal diameter (mm) 16 Millimeter
Clamping method External clamping	manufacturer product line Hainbuch		

Spannkopf TOP65 G D=17,00mm

Product ID : 10030557

Previous product ID : 900565.G170

Clamping device size SK65	manufacturer product line TOPlus chuck	Clamping type smooth	Nominal diameter (mm) 17 Millimeter
Clamping method External clamping	manufacturer product line Hainbuch		

Spannkopf TOP65 G D=18,00mm

Product ID : 10376222

Previous product ID : 900565.G180

Clamping device size SK65	manufacturer product line TOPlus chuck	Clamping type smooth	Nominal diameter (mm) 18 Millimeter
Clamping method External clamping	manufacturer product line Hainbuch		

Spannkopf TOP65 G D=19,00mm

Product ID : 10245914

Previous product ID : 900565.G190

Clamping device size SK65	manufacturer product line TOPlus chuck	Clamping type smooth	Nominal diameter (mm) 19 Millimeter
Clamping method External clamping	manufacturer product line Hainbuch		

Spannkopf TOP65 G D=20,00mm

Product ID : 10817939

Previous product ID : 900565.G200

Clamping device size SK65	manufacturer product line TOPlus chuck	Clamping type smooth	Nominal diameter (mm) 20 Millimeter
Clamping method External clamping	manufacturer product line Hainbuch		

Spannkopf TOP65 G D=21,00mm

Product ID : 10453824

Previous product ID : 900565.G210

Clamping device size SK65	manufacturer product line TOPlus chuck	Clamping type smooth	Nominal diameter (mm) 21 Millimeter
Clamping method External clamping	manufacturer product line Hainbuch		

Spannkopf TOP65 G D=22,00mm

Product ID : 10755980

Previous product ID : 900565.G220

Clamping device size SK65	manufacturer product line TOPlus chuck	Clamping type smooth	Nominal diameter (mm) 22 Millimeter
Clamping method External clamping	manufacturer product line Hainbuch		

Spannkopf TOP65 G D=23,00mm

Product ID : 10365612

Previous product ID : 900565.G230

Clamping device size SK65	manufacturer product line TOPlus chuck	Clamping type smooth	Nominal diameter (mm) 23 Millimeter
Clamping method External clamping	manufacturer product line Hainbuch		

Spannkopf TOP65 G D=24,00mm

Product ID : 10875901

Previous product ID : 900565.G240

Clamping device size SK65	manufacturer product line TOPlus chuck	Clamping type smooth	Nominal diameter (mm) 24 Millimeter
Clamping method External clamping	manufacturer product line Hainbuch		

Spannkopf TOP65 G D=25,00mm

Product ID : 10649880

Previous product ID : 900565.G250

Clamping device size SK65	manufacturer product line TOPlus chuck	Clamping type smooth	Nominal diameter (mm) 25 Millimeter
Clamping method External clamping	manufacturer product line Hainbuch		

Spannkopf TOP65 G D=26,00mm

Product ID : 10924313

Previous product ID : 900565.G260

Clamping device size SK65	manufacturer product line TOPlus chuck	Clamping type smooth	Nominal diameter (mm) 26 Millimeter
Clamping method External clamping	manufacturer product line Hainbuch		

Spannkopf TOP65 G D=27,00mm

Product ID : 10351148

Previous product ID : 900565.G270

Clamping device size SK65	manufacturer product line TOPlus chuck	Clamping type smooth	Nominal diameter (mm) 27 Millimeter
Clamping method External clamping	manufacturer product line Hainbuch		

Spannkopf TOP65 G D=28,00mm

Product ID : 10434870

Previous product ID : 900565.G280

Clamping device size SK65	manufacturer product line TOPlus chuck	Clamping type smooth	Nominal diameter (mm) 28 Millimeter
Clamping method External clamping	manufacturer product line Hainbuch		

Spannkopf TOP65 G D=29,00mm

Product ID : 10091067

Previous product ID : 900565.G290

Clamping device size SK65	manufacturer product line TOPlus chuck	Clamping type smooth	Nominal diameter (mm) 29 Millimeter
Clamping method External clamping	manufacturer product line Hainbuch		

Spannkopf TOP65 G D=30,00mm

Product ID : 10398942

Previous product ID : 900565.G300

Clamping device size SK65	manufacturer product line TOPlus chuck	Clamping type smooth	Nominal diameter (mm) 30 Millimeter
Clamping method External clamping	manufacturer product line Hainbuch		

Spannkopf TOP65 G D=31,00mm

Product ID : 10401326

Previous product ID : 900565.G310

Clamping device size SK65	manufacturer product line TOPlus chuck	Clamping type smooth	Nominal diameter (mm) 31 Millimeter
Clamping method External clamping	manufacturer product line Hainbuch		

Spannkopf TOP65 G D=32,00mm

Product ID : 10182841

Previous product ID : 900565.G320

Clamping device size SK65	manufacturer product line TOPlus chuck	Clamping type smooth	Nominal diameter (mm) 32 Millimeter
Clamping method External clamping	manufacturer product line Hainbuch		

[Spannkopf TOP65 G D=33,00mm](#)

Product ID : 10333080

Previous product ID : 900565.G330

Clamping device size SK65	manufacturer product line TOPlus chuck	Clamping type smooth	Nominal diameter (mm) 33 Millimeter
Clamping method External clamping	manufacturer product line Hainbuch		

[Spannkopf TOP65 G D=34,00mm](#)

Product ID : 10386770

Previous product ID : 900565.G340

Clamping device size SK65	manufacturer product line TOPlus chuck	Clamping type smooth	Nominal diameter (mm) 34 Millimeter
Clamping method External clamping	manufacturer product line Hainbuch		

[Spannkopf TOP65 G D=35,00mm](#)

Product ID : 10585990

Previous product ID : 900565.G350

Clamping device size SK65	manufacturer product line TOPlus chuck	Clamping type smooth	Nominal diameter (mm) 35 Millimeter
Clamping method External clamping	manufacturer product line Hainbuch		

[Spannkopf TOP65 G D=36,00mm](#)

Product ID : 10420614

Previous product ID : 900565.G360

Clamping device size SK65	manufacturer product line TOPlus chuck	Clamping type smooth	Nominal diameter (mm) 36 Millimeter
Clamping method External clamping	manufacturer product line Hainbuch		

Spannkopf TOP65 G D=37,00mm

Product ID : 10271460

Previous product ID : 900565.G370

Clamping device size SK65	manufacturer product line TOPlus chuck	Clamping type smooth	Nominal diameter (mm) 37 Millimeter
Clamping method External clamping	manufacturer product line Hainbuch		

Spannkopf TOP65 G D=38,00mm

Product ID : 10827173

Previous product ID : 900565.G380

Clamping device size SK65	manufacturer product line TOPlus chuck	Clamping type smooth	Nominal diameter (mm) 38 Millimeter
Clamping method External clamping	manufacturer product line Hainbuch		

Spannkopf TOP65 G D=39,00mm

Product ID : 11068800

Previous product ID : 900565.G390

Clamping device size SK65	manufacturer product line TOPlus chuck	Clamping type smooth	Nominal diameter (mm) 39 Millimeter
Clamping method External clamping	manufacturer product line Hainbuch		

Spannkopf TOP65 G D=40,00mm

Product ID : 10174565

Previous product ID : 900565.G400

Clamping device size SK65	manufacturer product line TOPlus chuck	Clamping type smooth	Nominal diameter (mm) 40 Millimeter
Clamping method External clamping	manufacturer product line Hainbuch		

Spannkopf TOP65 G D=41,00mm

Product ID : 10990285

Previous product ID : 900565.G410

Clamping device size SK65	manufacturer product line TOPlus chuck	Clamping type smooth	Nominal diameter (mm) 41 Millimeter
Clamping method External clamping	manufacturer product line Hainbuch		

Spannkopf TOP65 G D=42,00mm

Product ID : 10244210

Previous product ID : 900565.G420

Clamping device size SK65	manufacturer product line TOPlus chuck	Clamping type smooth	Nominal diameter (mm) 42 Millimeter
Clamping method External clamping	manufacturer product line Hainbuch		

Spannkopf TOP65 G D=43,00mm

Product ID : 10181135

Previous product ID : 900565.G430

Clamping device size SK65	manufacturer product line TOPlus chuck	Clamping type smooth	Nominal diameter (mm) 43 Millimeter
Clamping method External clamping	manufacturer product line Hainbuch		

Spannkopf TOP65 G D=44,00mm

Product ID : 11029256

Previous product ID : 900565.G440

Clamping device size SK65	manufacturer product line TOPlus chuck	Clamping type smooth	Nominal diameter (mm) 44 Millimeter
Clamping method External clamping	manufacturer product line Hainbuch		

Spannkopf TOP65 G D=45,00mm

Product ID : 10857184

Previous product ID : 900565.G450

Clamping device size SK65	manufacturer product line TOPlus chuck	Clamping type smooth	Nominal diameter (mm) 45 Millimeter
Clamping method External clamping	manufacturer product line Hainbuch		

Spannkopf TOP65 G D=46,00mm

Product ID : 10704556

Previous product ID : 900565.G460

Clamping device size SK65	manufacturer product line TOPlus chuck	Clamping type smooth	Nominal diameter (mm) 46 Millimeter
Clamping method External clamping	manufacturer product line Hainbuch		

Spannkopf TOP65 G D=47,00mm

Product ID : 10198937

Previous product ID : 900565.G470

Clamping device size SK65	manufacturer product line TOPlus chuck	Clamping type smooth	Nominal diameter (mm) 47 Millimeter
Clamping method External clamping	manufacturer product line Hainbuch		

Spannkopf TOP65 G D=48,00mm

Product ID : 10692311

Previous product ID : 900565.G480

Clamping device size SK65	manufacturer product line TOPlus chuck	Clamping type smooth	Nominal diameter (mm) 48 Millimeter
Clamping method External clamping	manufacturer product line Hainbuch		

Spannkopf TOP65 G D=49,00mm

Product ID : 10362760

Previous product ID : 900565.G490

Clamping device size SK65	manufacturer product line TOPlus chuck	Clamping type smooth	Nominal diameter (mm) 49 Millimeter
Clamping method External clamping	manufacturer product line Hainbuch		

Spannkopf TOP65 G D=50,00mm

Product ID : 10312479

Previous product ID : 900565.G500

Clamping device size SK65	manufacturer product line TOPlus chuck	Clamping type smooth	Nominal diameter (mm) 50 Millimeter
Clamping method External clamping	manufacturer product line Hainbuch		

Spannkopf TOP65 G D=51,00mm

Product ID : 10680051

Previous product ID : 900565.G510

Clamping device size SK65	manufacturer product line TOPlus chuck	Clamping type smooth	Nominal diameter (mm) 51 Millimeter
Clamping method External clamping	manufacturer product line Hainbuch		

Spannkopf TOP65 G D=52,00mm

Product ID : 10904617

Previous product ID : 900565.G520

Clamping device size SK65	manufacturer product line TOPlus chuck	Clamping type smooth	Nominal diameter (mm) 52 Millimeter
Clamping method External clamping	manufacturer product line Hainbuch		

Spannkopf TOP65 G D=53,00mm

Product ID : 10031538

Previous product ID : 900565.G530

Clamping device size SK65	manufacturer product line TOPlus chuck	Clamping type smooth	Nominal diameter (mm) 53 Millimeter
Clamping method External clamping	manufacturer product line Hainbuch		

Spannkopf TOP65 G D=54,00mm

Product ID : 10537946

Previous product ID : 900565.G540

Clamping device size SK65	manufacturer product line TOPlus chuck	Clamping type smooth	Nominal diameter (mm) 54 Millimeter
Clamping method External clamping	manufacturer product line Hainbuch		

HAINBUCH GREASE 2085/0003

Product ID : 10825733

Previous product ID : 373241.1021

manufacturer product line SPANNTOP nova chuck • SPANNTOP mini chuck • TOPlus chuck • TOPlus chuck mini • TOPlus chuck with end-stop	Clamping method External clamping	manufacturer product line Hainbuch
--	---	---

Other accessories

Clamping head TOP65 HSW D=5,00mm top65hswr5,0

Product ID : 10918749

Previous product ID : 900565.W050
