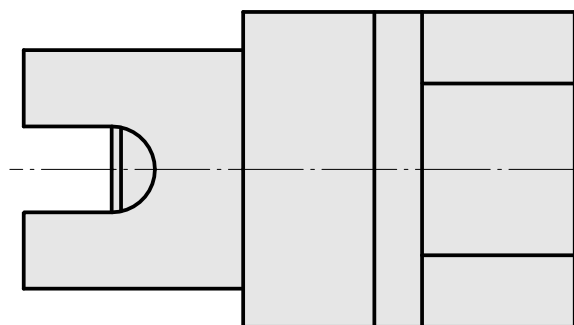
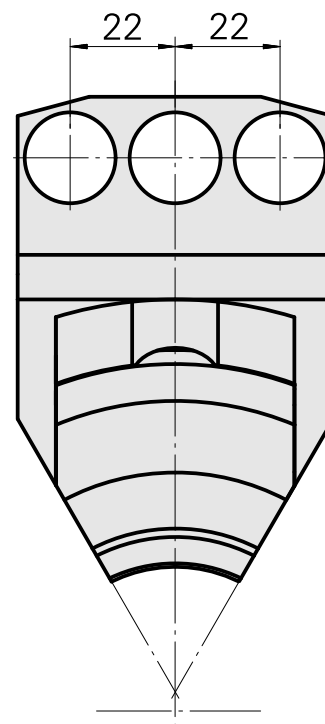
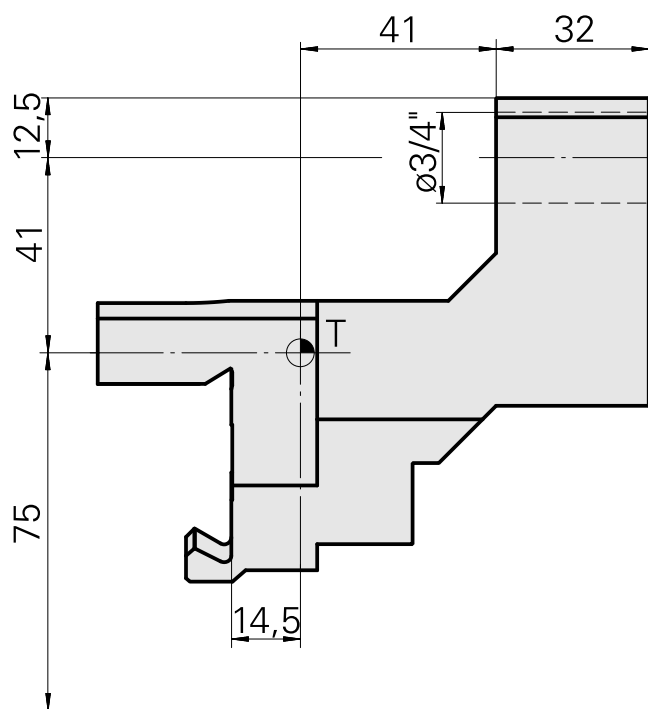
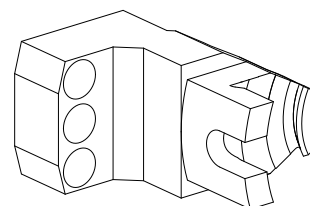


Portapunte Prisma rotondo D3/4", triplo

Caratteristiche tecniche

Gambo TNL	Prisma rotondo
Azionamento	non azionato
Fissaggio TNL	Vite di serraggio centrale
Attacco	D3/4"
ruotabile di 180°	no
X [mm]	41
Y [mm]	±22
Z [mm]	41
Prodotti INDEX TRAUB	TNL12



10128558
987570

INDEX

Documenti

Non sono disponibili download per questo prodotto